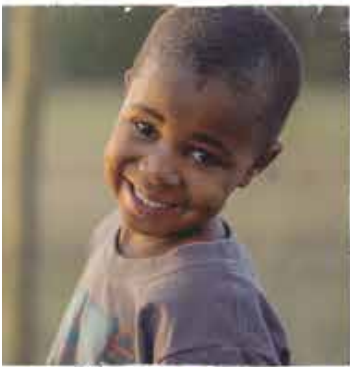


IMPACT

REPORT



TREAT EVERY LAST ONE AS YOUR FATHER, MOTHER, BROTHER, SISTER, OR CHILD

Free Comprehensive Health Services Provided by The Luke Commission

Free Services Provided	2006	2007	2008	2009	2010	2011	2012	2013	2014	2015	2016	2017	2018	2019	2020	2021	2022	to date
Medical Patients Visits	7,159	7,668	22,122	16,024	19,553	19,744	24,410	36,412	53,680	60,983	59,571	61,570	66,986	98,681	116,837	129,495	217,513	1,018,408
Eye Glasses Fitted	2,730	3,017	10,339	6,236	7,704	4,219	4,524	6,842	11,099	13,279	11,708	10,524	11,444	12,573	7,333	6,398	8,770	138,739
Blood Pressure Readings	4,368	4,535	13,240	12,697	13,530	13,324	14,339	20,268	28,429	29,275	28,483	29,464	35,395	50,584	102,206	415,548	377,484	1,193,169
Blood Sugar Tested	1,202	1,241	2,543	1,856	1,604	1,914	3,314	4,058	4,198	4,668	3,182	4,397	7,365	10,708	19,210	69,306	42,719	183,484
Medication Packets Dispensed	53,600	70,500	170,000	152,000	166,201	167,824	189,300	218,472	322,080	335,407	327,641	338,635	368,423	542,746	642,604	650,814	672,659	5,388,905
Patients Tested & Counseled for HIV		247	3,200	4,112	5,862	5,766	6,619	7,196	11,012	17,655	21,845	24,452	27,389	19,499	15,939	19,739	26,703	217,235
Wheelchairs/Adaptive Equipment Fitted		5	24	147	144	158	305	320	525	623	447	367	515	1,355	709	610	648	6,902
Cataracts Found			153	147	135	93	65	52	46	1,557	604	416	458	337	417	493	1,132	6,105
Laboratory Services Rendered				1,778	3,304	2,837	2,546	1,547	658	866	2,267	1,416	1,565	7,743	9,891	267,200	278,344	581,962
TB Screenings Completed					4,567	8,119	10,543	11,689	18,644	19,396	18,094	19,349	24,434	35,024	74,562	129,495	215,262	589,178
HIV ARV Adherence Counseling Sessions Delivered					1,054	1,178	876	650	452	722	1,889	1,180	1,304	9,923	15,378	16,375	22,279	73,260
X-rays Obtained							504	554	596	975	1,403	1,161	1,178	2,059	4,002	14,330	17,491	44,253
Voluntary Medical Male Circumcisions Performed							943	1,286	2,201	2,170	3,268	2,710	2,382	2,104	715	100	303	18,182
Other Surgeries/Procedures Completed							21	32	54	77	44	82	46	42	124	111	409	1,042
Long Acting Removable Contraceptives (LARCs) Placed										288	459	319	200	222	318	211	248	2,265
Youth Vision Screening										13,244	38,387	35,530	23,651	18,361	8,950	10,205	3,289	151,617
Cataracts Removed										262	261	235	251	295	234	-	350	1,888
Other Eye Surgeries Completed										13	47	71	76	57	27	-	39	330
Initiated on Anti-Retroviral Treatment (ART)											163	401	592	1,132	1,394	1,136	1,480	6,298
TB+ Cases Started on TB Treatment											9	48	51	92	153	215	272	840
GeneXpert Tests Performed											299	318	586	1,757	1,154	872	1,544	6,530
Immunizations Given (non-COVID)											880	1,125	809	336	437	1,298	1,108	5,993
Cervical Cancer Screenings													1,371	5,624	3,307	3,772	5,534	19,608
Procedures to Remove Pre-/Cancerous Cervical Cells													39	75	158	181	330	783
HIV+ Youth Support Club Participants													195	1,020	920	605	541	3,281
3-month Life Skills Training Participants														358	284	249	244	1,135
Inpatient Nights at Miracle Campus														6,736	11,074	20,489	14,696	52,995
Inpatient ICU Nights at Miracle Campus															363	11,746	4,376	16,485
COVID-19 Tests Completed															1,951	11,209	18,308	31,468
COVID-19 Inpatient Nights															1,043	9,949	2,078	13,070
COVID-19 ICU Nights															185	8,321	1,319	9,825
Number of COVID-19 Vaccine Doses Given																89,927	80,741	170,668
Snakebite Inpatient Nights															465	644	370	1,479
Total Medical Services Provided	15,471	16,736	51,535	43,431	66,972	79,421	99,649	157,543	274,171	321,930	357,634	375,644	453,979	507,394	501,474	920,770	1,337,781	5,581,535
Condoms (Male and Female) Distributed					13,947	116,267	231,476	159,467	109,964	507,078	483,302	1,056,534	1,811,078	1,570,660	1,483,620	1,112,225	1,957,997	10,613,615
Scripture Booklets/Book of Hope Disbursed	18,300	21,700	58,200	84,100	65,275	45,876	27,705	50,105	55,700	62,110	58,785	62,335	66,546	98,840	117,705	129,495	120,207	1,142,984
Dried Food Packets Given															39,122	109,741	111,355	260,218